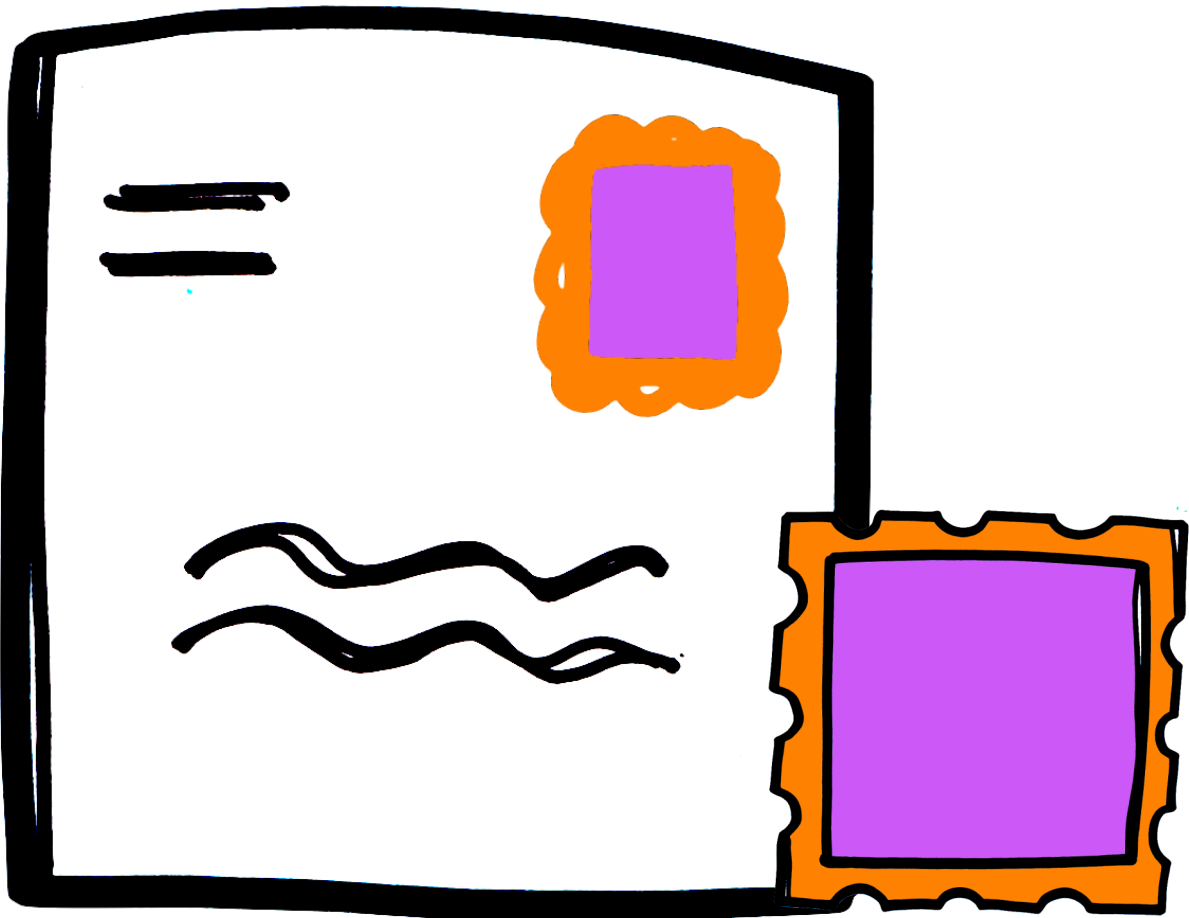


# Stamps & Letters



# SHAPE MATCHING

# Stamps to Letters Shape Matching

## Instructions:

Print the activity pages for your student.

Laminate the pages.

Discuss the shapes.

Give your student a dry erase marker.

Show your student how to draw a line from the triangle stamp to the triangle letter. Student can continue with the other four sets and the second page.

A black and white version has also been provided on page 5-6.

## Terms of Use:

This product may be used for your own classroom or personal use.

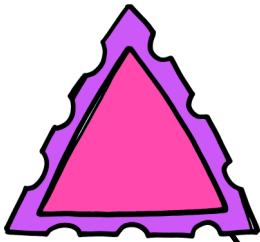
It may not be shared as a pdf file, on the web, or in any other way.

©www.homeschoolshare.com

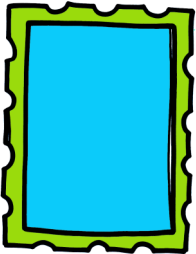
## Copyright Thanks:



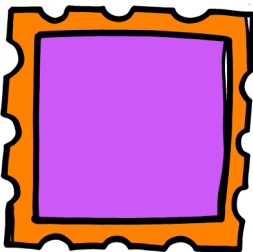
Put the shape stamps on the shape letters.



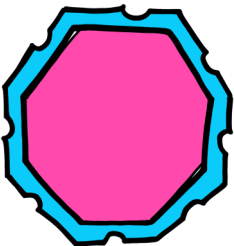
triangle



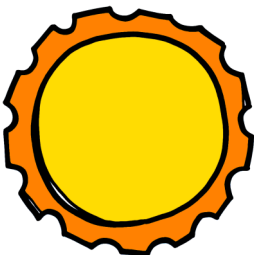
rectangle



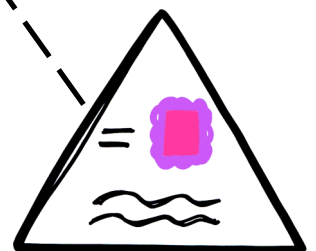
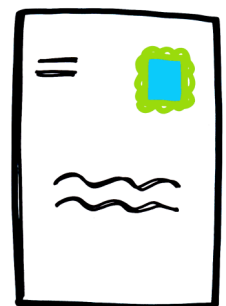
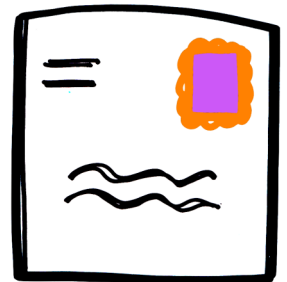
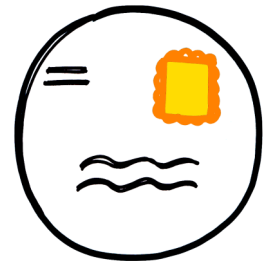
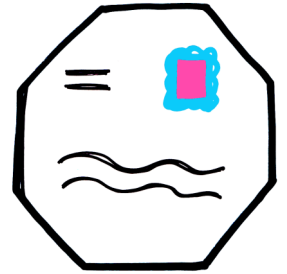
square



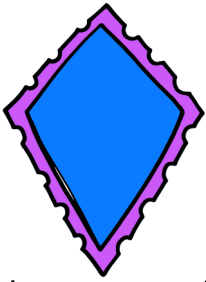
octagon



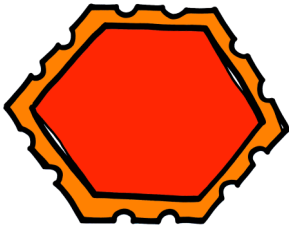
circle



Put the shape stamps on the shape letters.



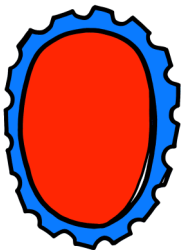
diamond



hexagon



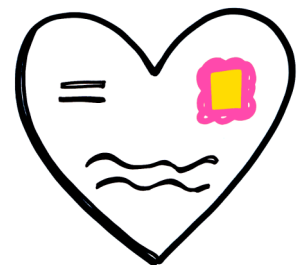
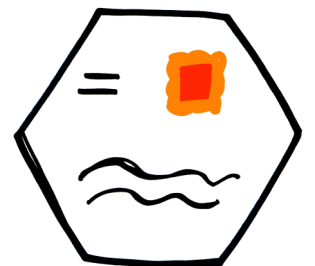
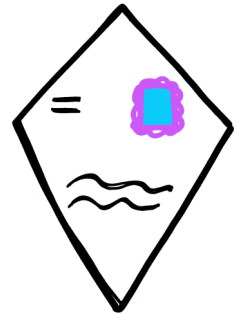
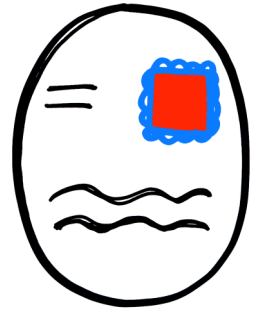
heart



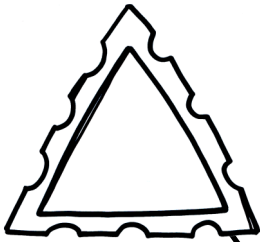
oval



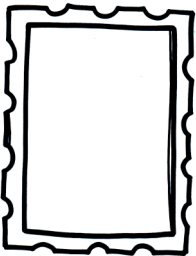
star



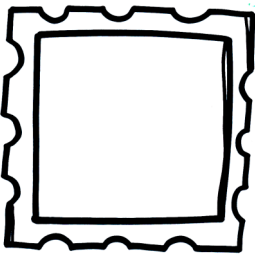
Put the shape stamps on the shape letters.



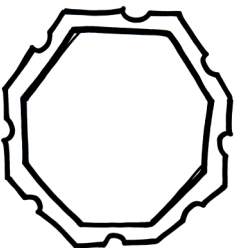
triangle



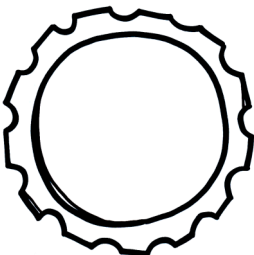
rectangle



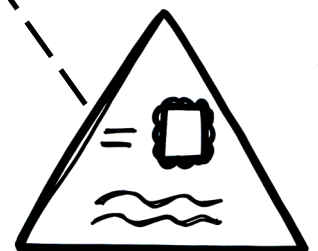
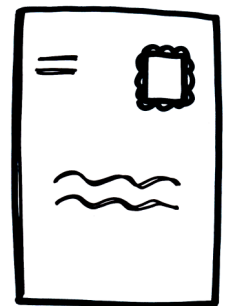
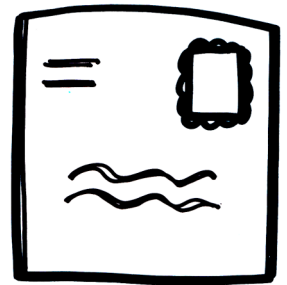
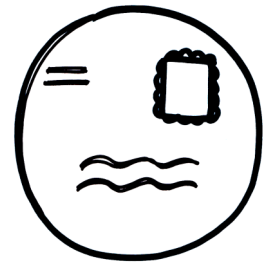
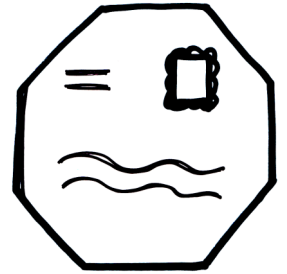
square



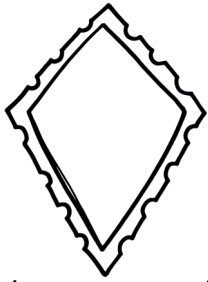
octagon



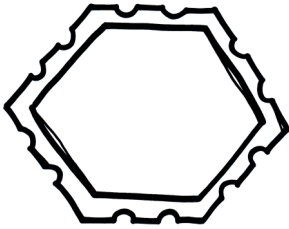
circle



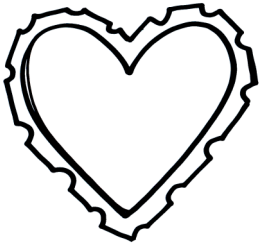
Put the shape stamps on the shape letters.



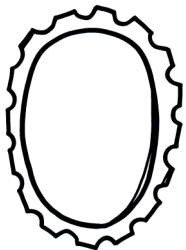
diamond



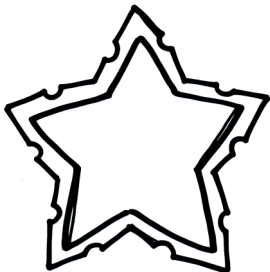
hexagon



heart



oval



star

