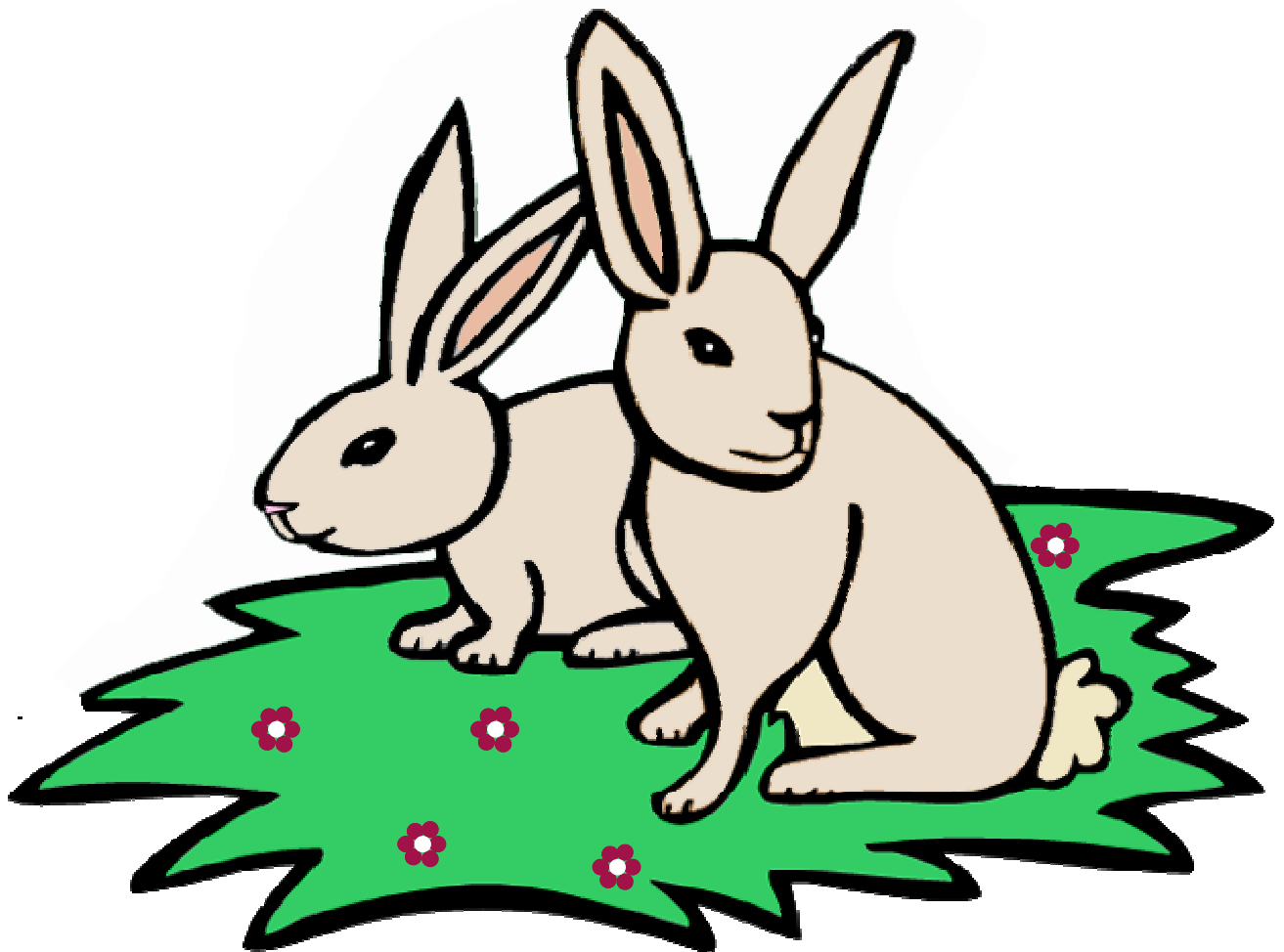
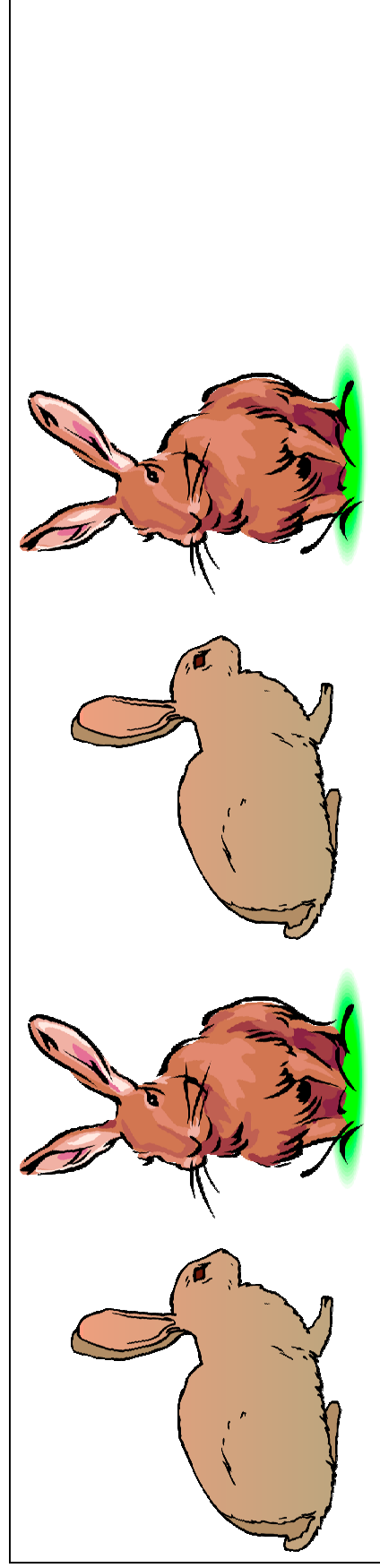
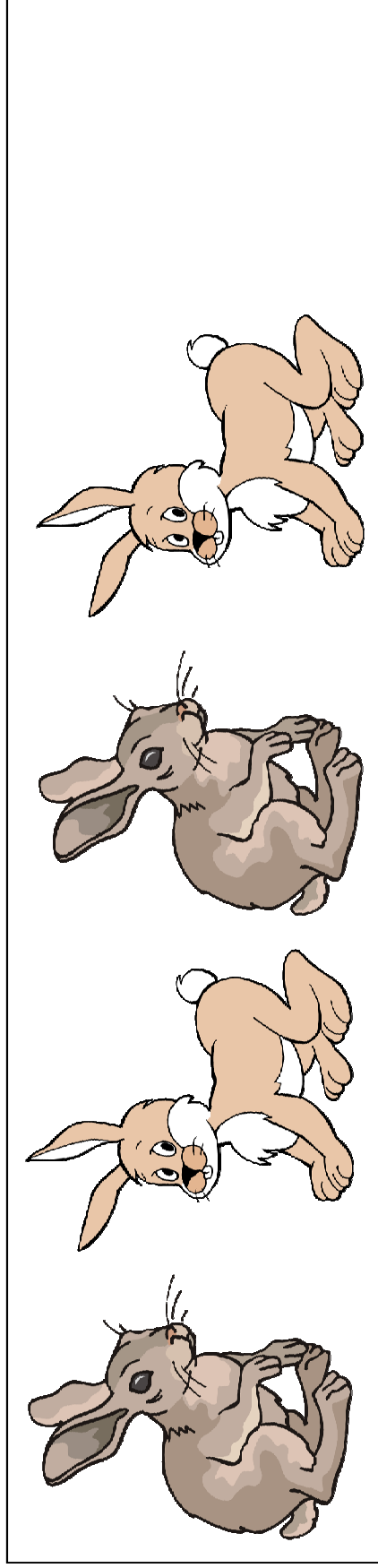
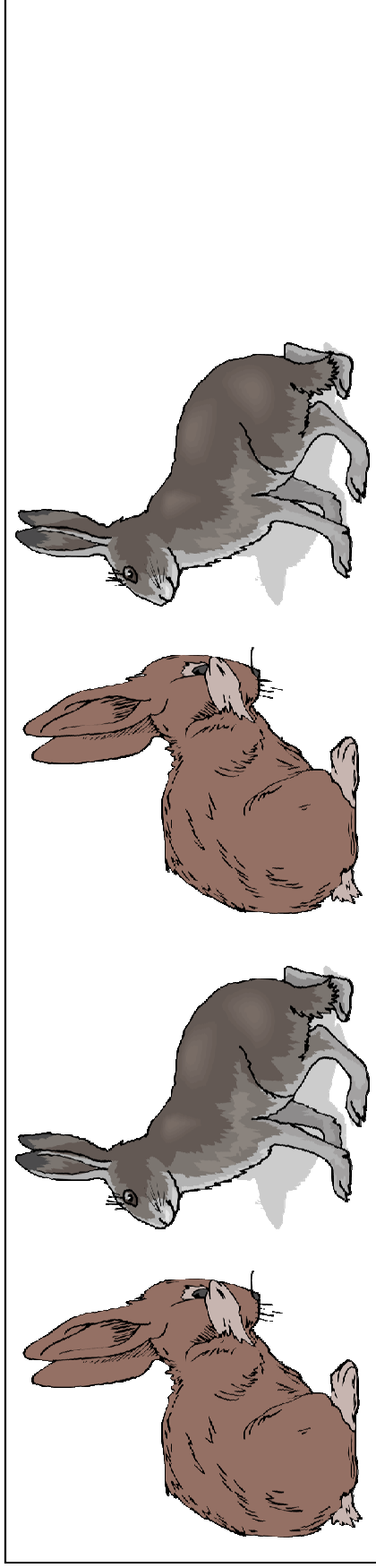


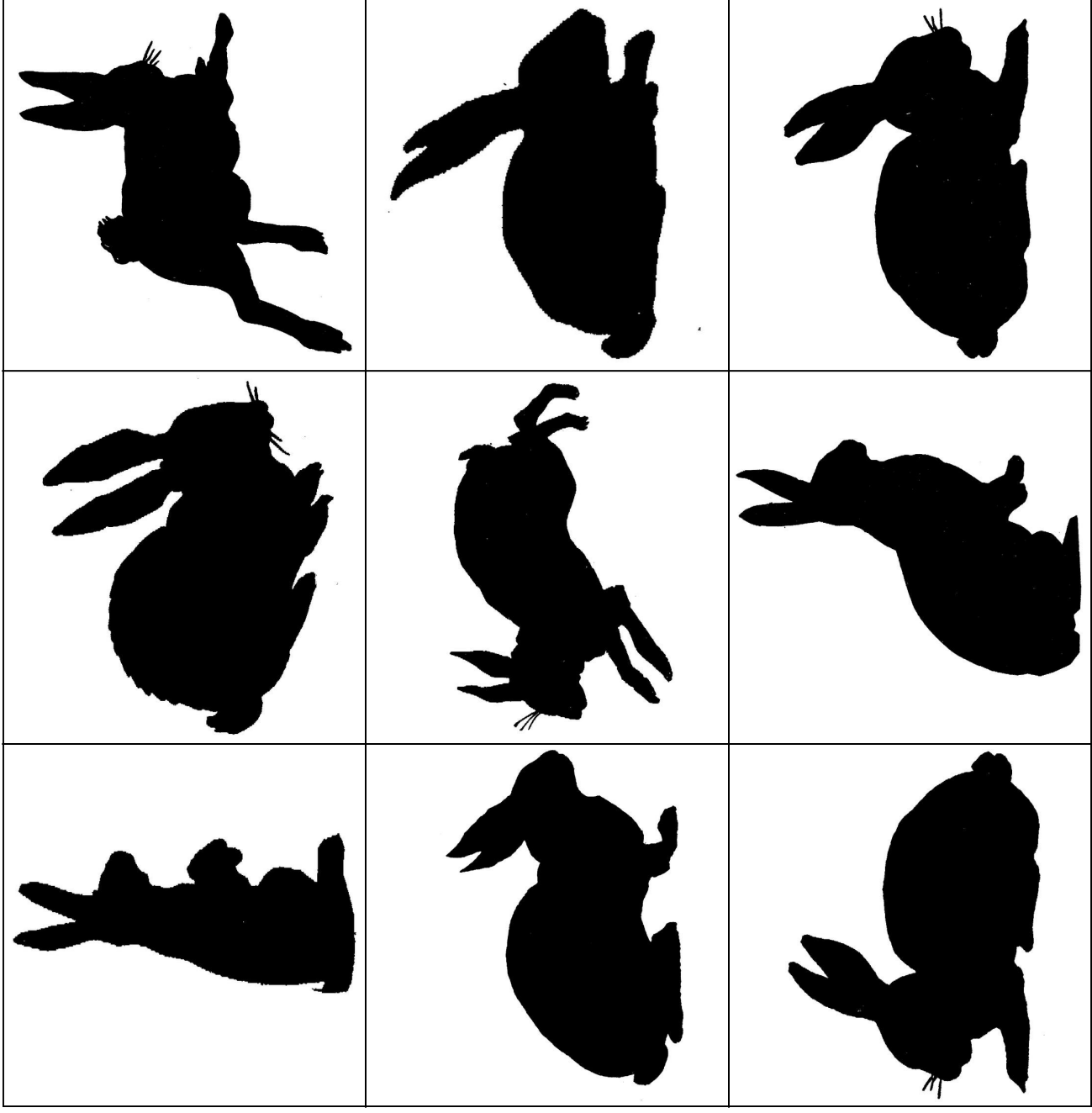
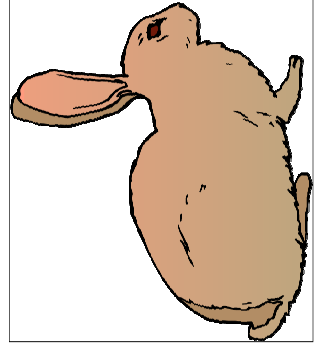
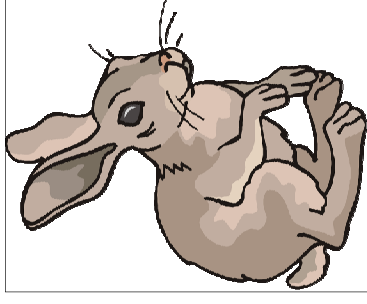
# *The RUNAWAY BUNNY*

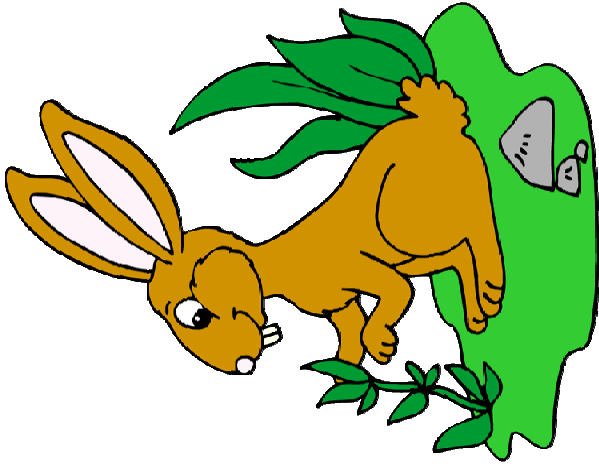
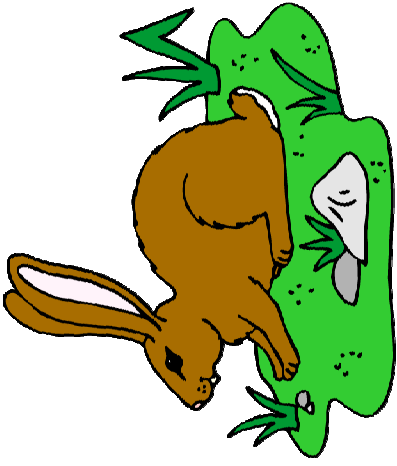


Cut out each strip. Laminate if desired. Add a magnet or Velcro piece to the end of each strip. Cut out pictures on next page and laminate. Add a magnet or Velcro piece to the back of each piece. Let your student place the correct rabbit on the end of each strip.

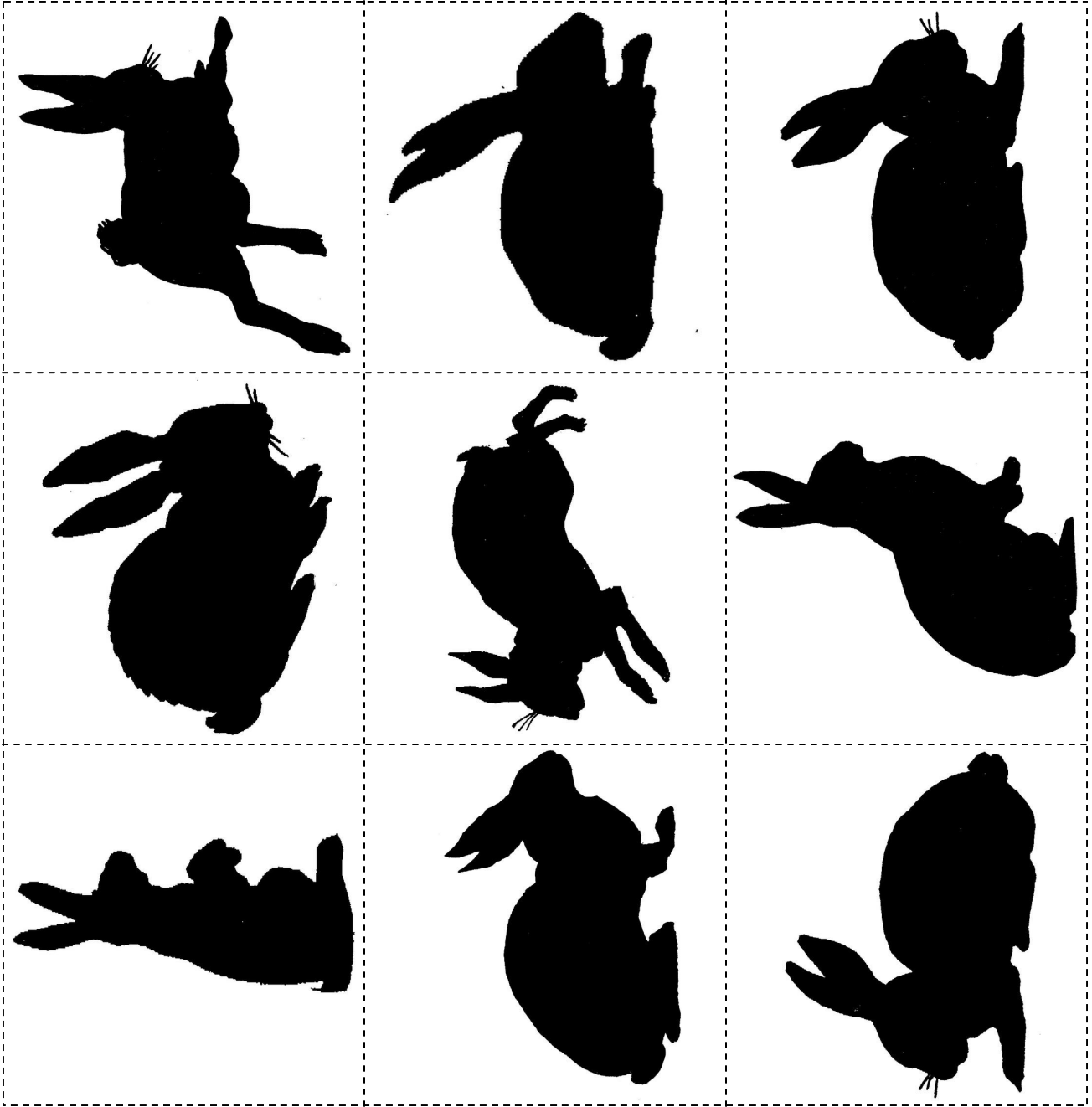


Cut out puzzle as one piece. Cut out pieces on next page on the dotted lines. Have your student match the rabbits to the correct squares.

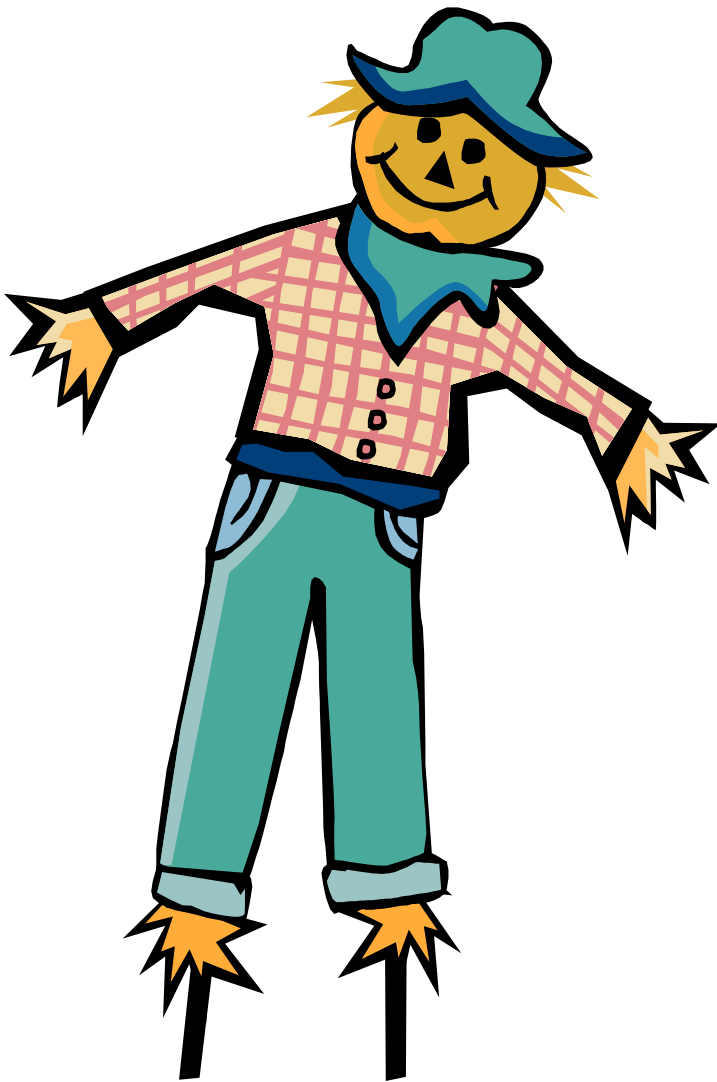
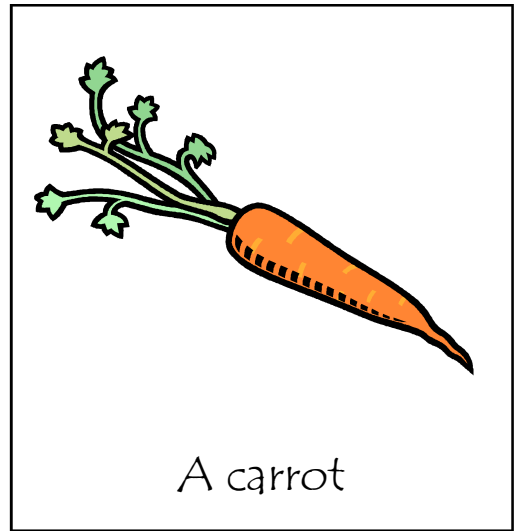




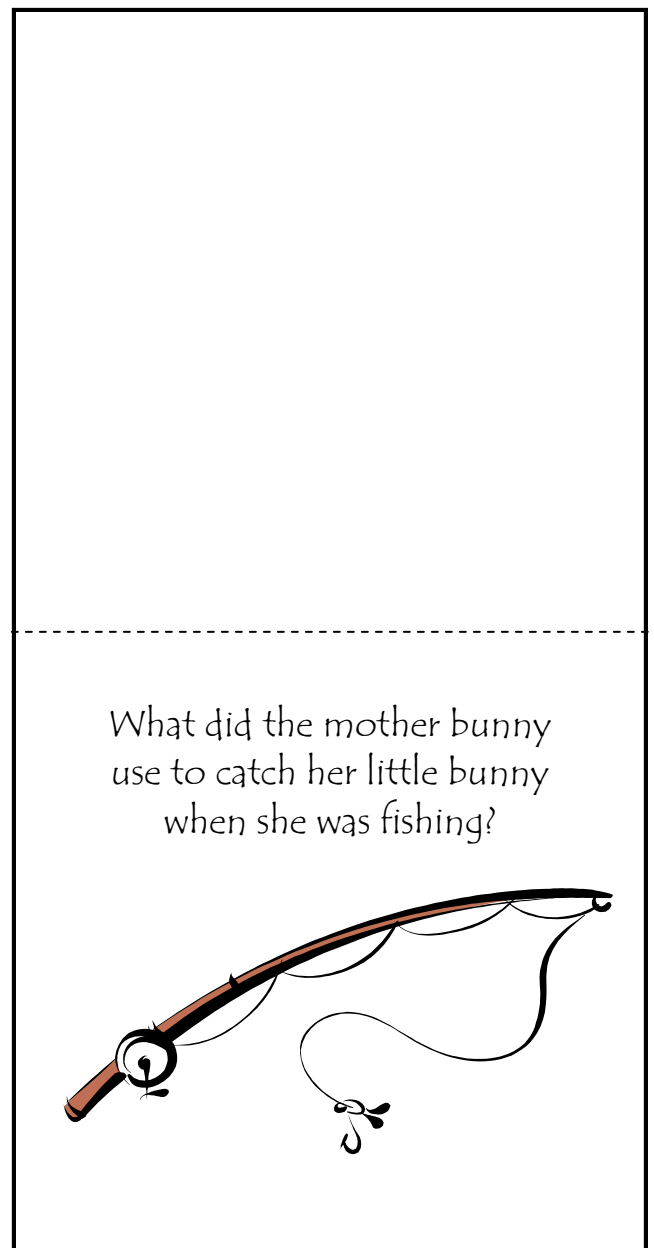
Use these colored images as desired.



Cut out the booklet and the carrot  
'answer card' following the black lines.  
Fold the booklet on the dotted line.



Cut out the scarecrow (you can print it on card-  
stock to make it sturdier) and tape a popsicle  
stick on the back to make a scarecrow puppet.



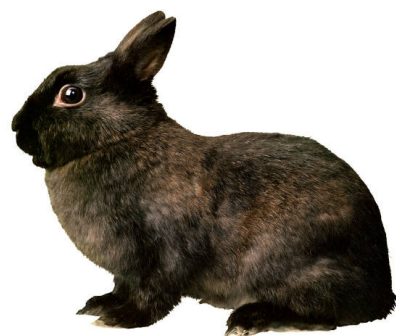
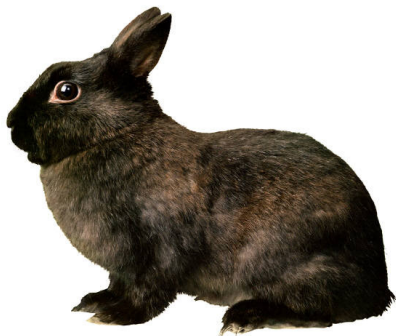
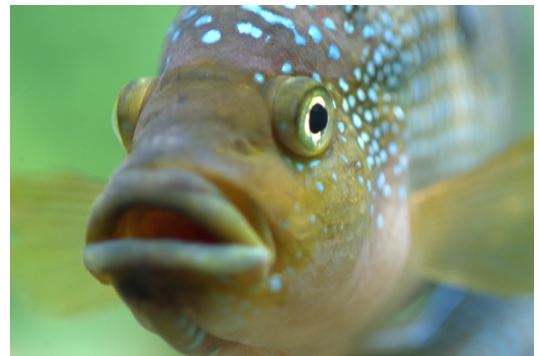
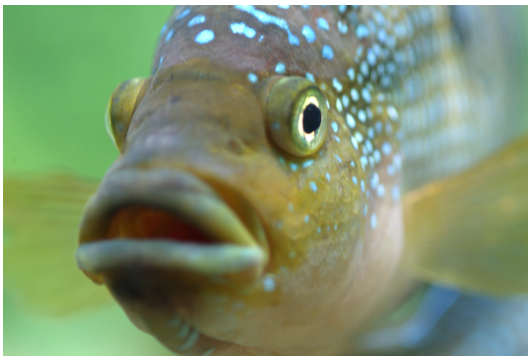
The following pages contain pictures to use for animal classification (fish, kangaroo, bird, donkey, dog, monkey, and rabbit). There are two copies of each animal so they can be used also as a simple matching game. You may wish to print these on cardstock.

There are also two pages of If/Then cards. Place the two title cards on the table and have your child help you sort them according to what happened in *The Runaway Bunny* (example: If you become a fish, I will become a fisherman.”). You may also wish to print these on cardstock.

Below are two pockets to store the cards in. Cut the pockets out. Fold back flap up and wrap side flaps around the back and glue down. Glue the back of the pocket into your lapbook.

My 'if' and  
'then' cards

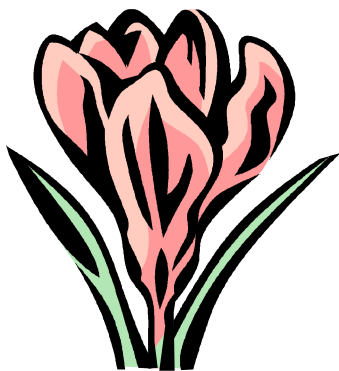
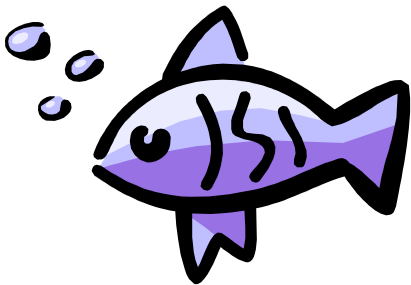
Animals  
I know

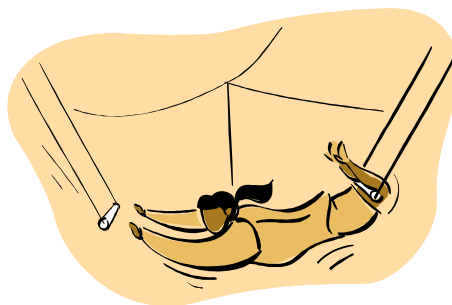
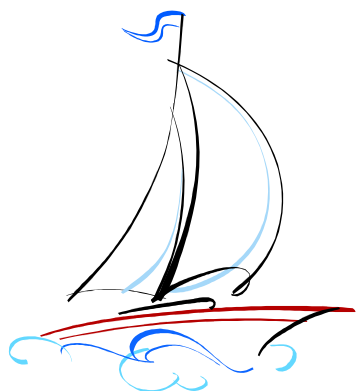
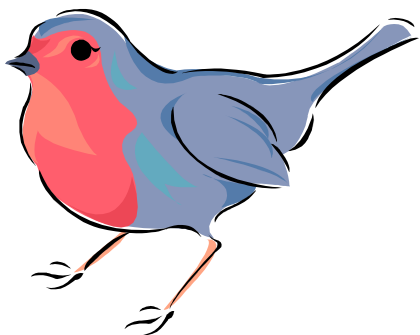


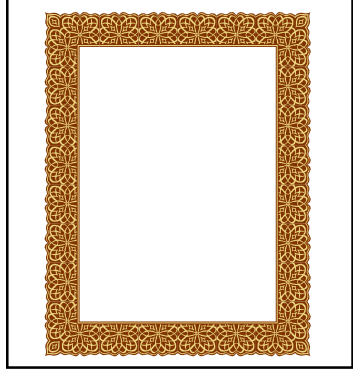
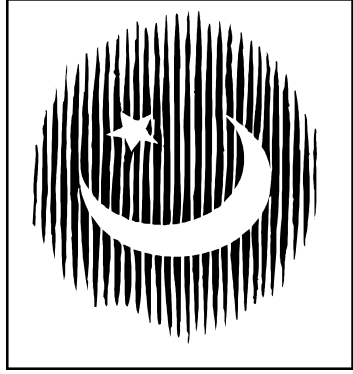
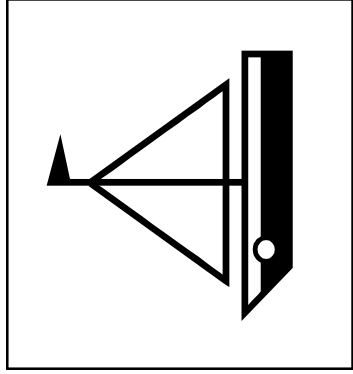


# If

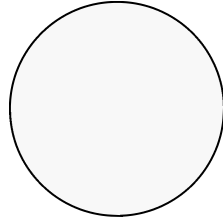
# Then







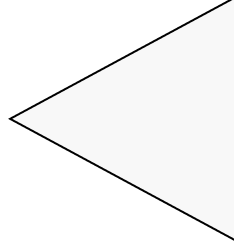
crescent



circle



rectangle



triangle

Cut book out along solid lines and also dotted gray lines. Fold on solid gray lines so that you shapes and words are still seen. Cut out picture squares above and paste under the correct flaps. Can your student find the shapes in the story? How many of each shape can she find?