

Hissing Madagascar Cockroaches



Hissing Madagascar Cockroach Research & Lessons

Anatomy

Adults are **wingless**.

Males possess large “horns” on their **pronotum**.

They rely on their **antennae** to sense the world around them.

The **abdomen** has 11 or so segments although 8 or 9 are usually visible.

Spiracles, used for breathing, also enable hissing behavior.

They have sharp spines on their six **legs**.

Life Cycle

Stage 1: Egg. Females create a cocoon-like egg case called an *ootheca*. They carry the eggs inside their bodies. The eggs hatch inside their bodies and they bear living young. They can give birth to as many as 60 nymphs at one time!

Stage 2: Nymph. Nymphs undergo 6 molts before reaching maturity in 7 months.

Stage 3: Adult. Adults are wingless and can live for 2 to 5 years.

When are “Hissers” active?

Are they **crepuscular**? **No.** When an animal is said to be crepuscular, it is active during the twilight hours at dawn and dusk. Examples: rabbits, cats.

Are they **nocturnal**? **Yes.** Nocturnal animals only come out at night. Many of these animals have a specifically developed sense of vision which helps them to see in the dark, as they often have excellent hearing as well. Examples: bats, owls.

Are they **diurnal**? **No.** Animals who are active during the day are known as diurnal. Example: humans.

Animals that like to eat Hissing Madagascar Cockroaches

Arachnids, tenrecs and birds.

Diet

In the wild, Hissing Madagascar Cockroaches like to eat **rotting fruit and meat**.

In captivity, they like to eat **fruits, vegetables and pellet foods**.

Hissing Cockroach Classification

Kingdom: **Animalia**

Phylum: **Arthropoda**

Class: **Insecta**

Order: **Blattodea**

Family: **Blaberidae**

Genus: **Gromphadorhina**

Species: **G. portentosa**

Map of Madagascar

Complete the Madagascar map.

Materials and information on this website may be used for your own personal and school use. **Material may not be shared electronically or be used for resale.**

© Homeschool Share

Kingdom	
Phylum	
Class	
Order	
Family	
Genus	
Species	

Hissing Cockroach Classification



Directions: Cut out book as one piece. Fold in half. Paste cover to the front of the book.

Males possess large "horns" on

their _____

Adults are _____

They rely on their _____

to sense the world around them.



They have sharp spines on their

six _____

The _____ has 11 or so

segments although 8 or 9 are usually visible.

_____, used for breathing,

also enable hissing behavior.

Anatomy Words:

- Wingless
- Abdomen
- Legs
- Pronotum
- Antennae
- Spiracles

Hissing Madagascar Cockroach Anatomy

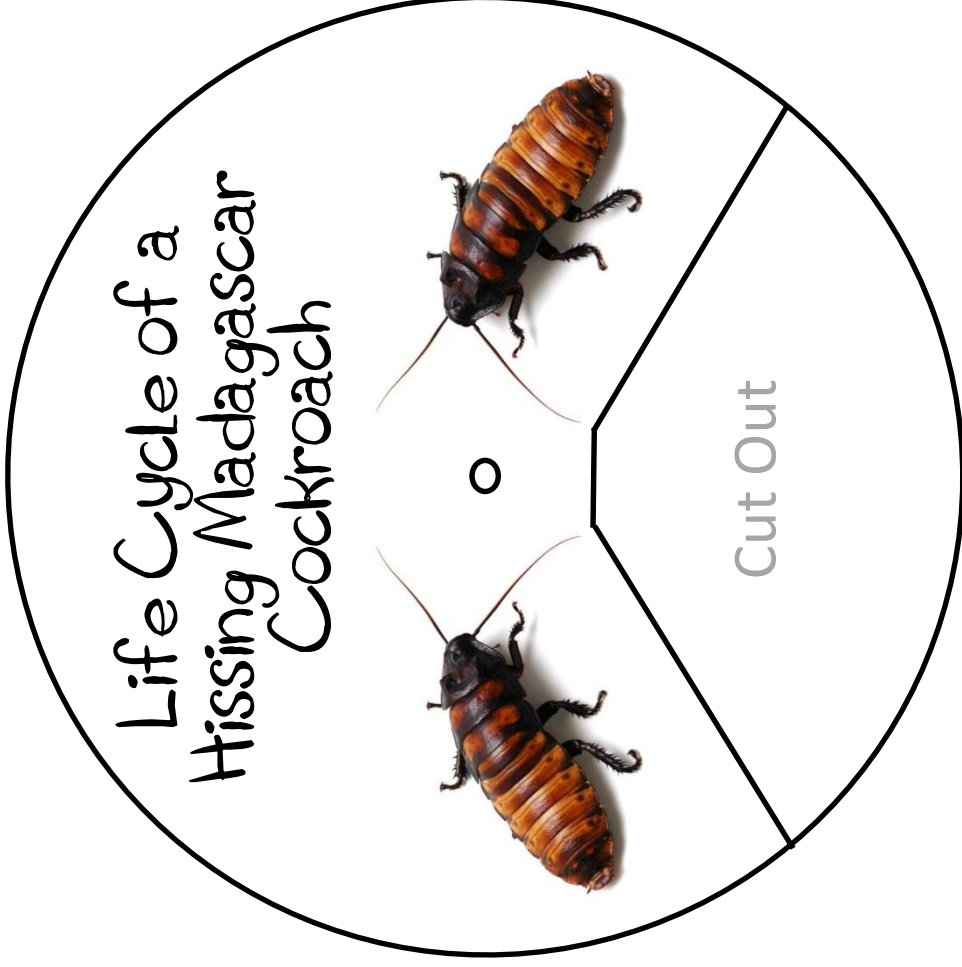


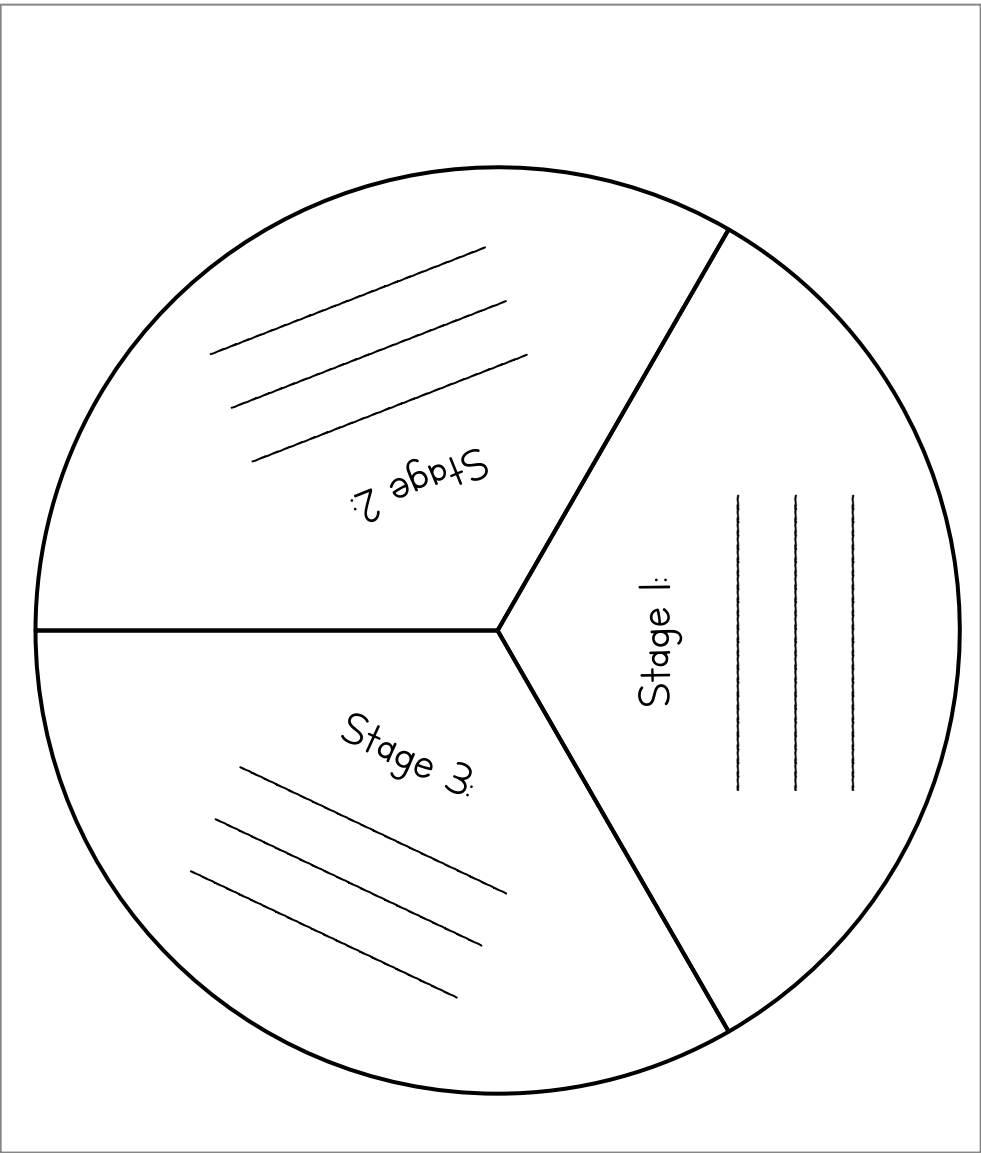
© Homeschool Share

Directions: Cut out book as one piece. Fold in half. Paste cover to the front of the book.

Directions: Print on cardstock. Cut wheels out. Add text and draw pictures for each part of the roach's life cycle. Stack wheels together and secure with a brad.

© Homeschool Share





When Are "...Hissers" Active?



Directions: Cut out pieces. Stack together and secure with a staple at the top of the book.

Are they **crepuscular**? When an animal is said to be crepuscular, it is active during the twilight hours at dawn and dusk. Examples: rabbits and cats.

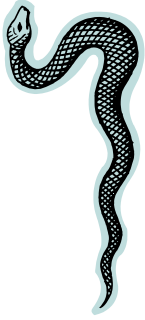
☐

Are they **nocturnal**? Nocturnal animals only come out at night. These animals have a specially developed sense of vision which helps them to see in the dark. Examples: bats and owls.

☐

Are they **diurnal**? Animals who are active during the day are known as diurnal. Example: squirrels, turtles, and songbirds.

☐



Predators



Animals that like to eat

Hissing Madagascar Cockroaches:

Directions: Cut out matchbook as one piece. Cut out writing piece. Fold the book like a matchbook, using the dotted lines as your guide. Paste the writing piece inside the matchbook.



Diet



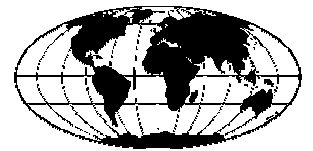
In the wild, Hissing Madagascar
Cockroaches like to eat ...

In captivity, they like to
eat ...

Directions: Cut out matchbook as one piece. Cut out writing piece. Fold the book like a matchbook, using the dotted lines as your guide. Paste the writing piece inside the matchbook.

Is
Madagascar?

Where
in
the
World. . .



What continent is Madagascar on?

Find Madagascar on the map and color it in.

Cut out shutter book and map on solid lines.
Fold shutter book on dotted lines so that words
are on cover. Glue map into book under shutters.