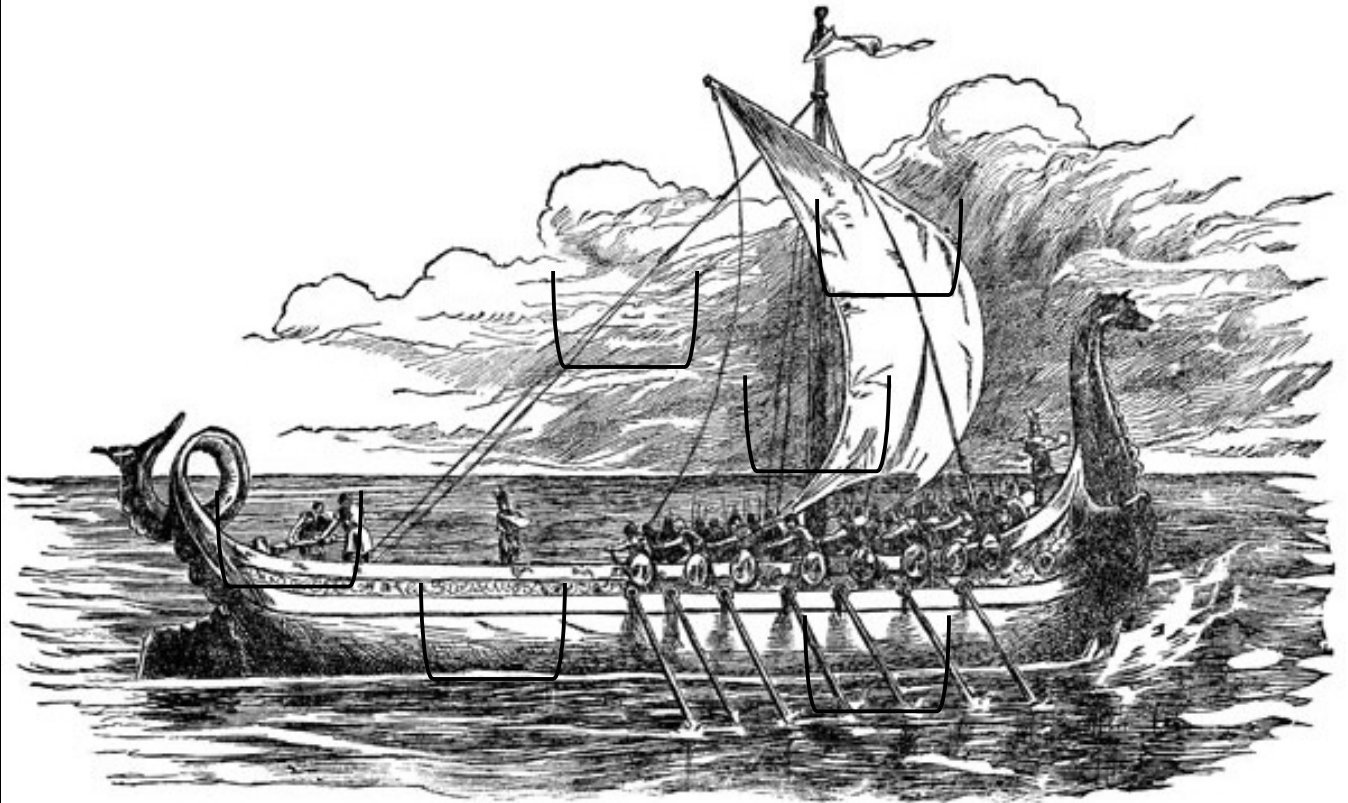
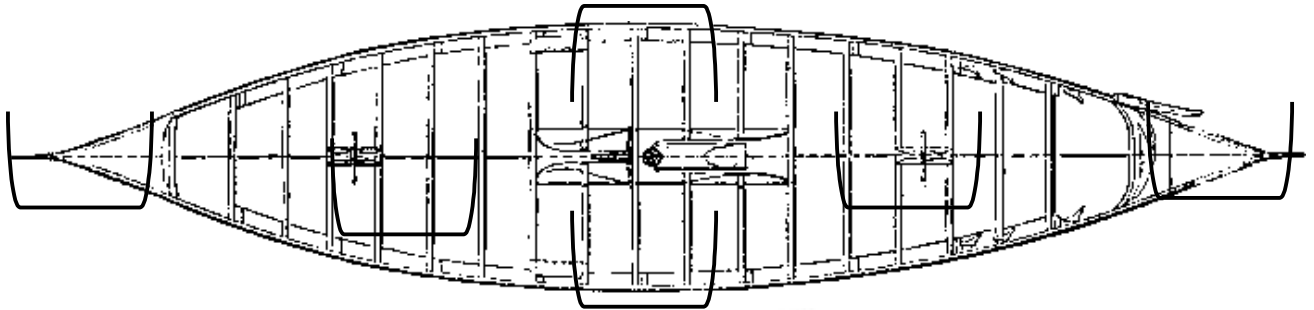


--	--	--	--	--	--

Front end of Viking ship      Platform extending horizontally from one side of a ship to the other      Ship's backbone, running along the centerline from the prow to stern      Left side of ship      Right side of ship      Rear End of ship



The ropes and cords attached to the sail      Used to row boat when there was no wind      The main body of the ship      Large steering board      Tall narrow pole that support sails and running rigging      Fabric attached to mast to catch wind and propel ship forward

--	--	--	--	--	--

Prow	Deck	Keel	Port	Starboard	Stern
Rigging	Oar	Hull	Rudder	Mast	Sail

Top Picture

Bottom Picture

Instructions:

Cutting –

Cut out pictures as one piece on solid lines. Valley fold on dotted lines and then cut flaps. Using a razor blade, cut out peek-a-boo flaps where marked on ships. Cut out word tags on solid lines.

Gluing –

Glue picture into lapbook, being sure to avoid all flap area. Glue word tags under appropriate peek-a-boo flaps, identifying the parts of the ship.

Writing –

The writing will be like Jeopardy. The answers have been provided for you. On the outside of each flap, write the question. Example: under flap is “Front end of Viking ship”. You will write, “What is the prow?” on outside of flap.

Clipart © <http://etc.usf.edu/clipart>

Component © <http://www.homeschoolshare.com>