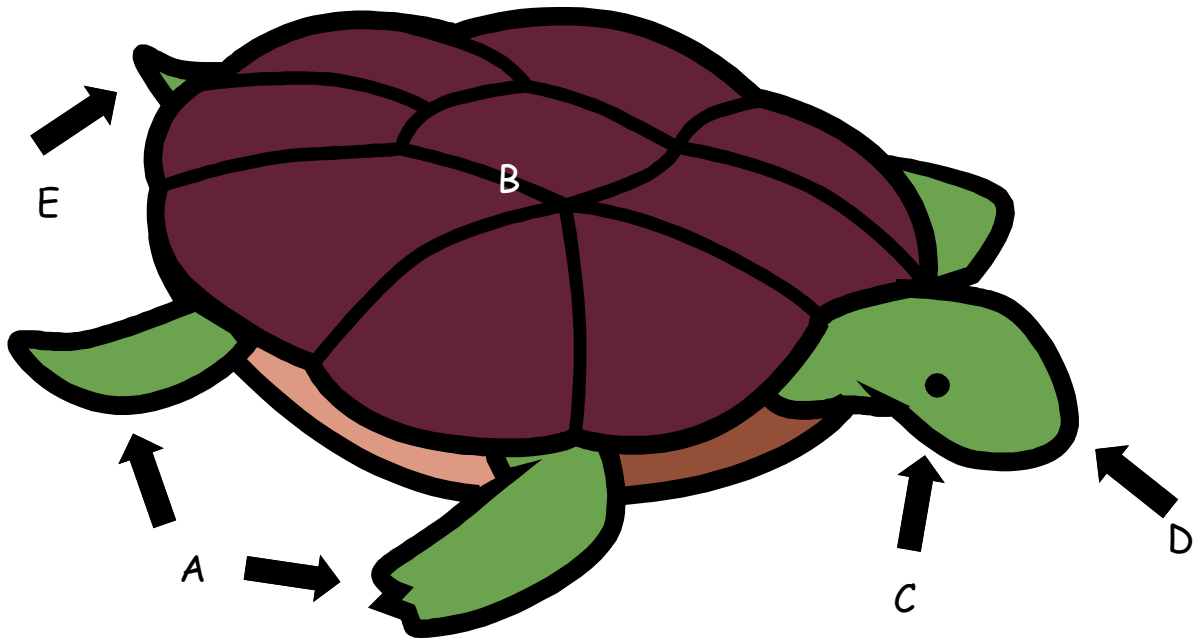


Anatomy Facts Book (see following page for instructions)



A

B

C

D

E

<i>tail</i>	<i>shell</i>	<i>mouth</i>

Instructions: Cut out each of the rectangles on this page as one piece. Fold each like a matchbook. Inside each matchbook write one or two facts about the part of the turtle on listed on the cover. When finished, cut out the turtle anatomy page (previous) and paste each matchbook on one of the five lettered squares that matches its location on the turtle picture.

<i>flippers</i>	<i>eyes, ears, & nose</i>

<p>Male sea turtles have longer tails than females.</p>	<p>Front flippers are for swimming fast and strong. Back flippers are for turning and stopping.</p>	<p>Sea turtles can smell and hear very well. They can see great underwater, but not on land.</p>
<p>The top of the turtle's shell is called the <u>carapace</u> and the bottom (its belly) is called the <u>plastron</u>.</p>	<p>Sea turtles do not have teeth. What they can't tear with their jaws, they swallow whole.</p>	