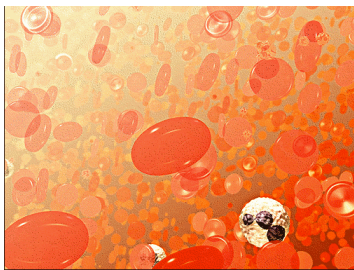


Cut out on solid lines. Mountain fold on dotted lines, folding so cover is on top. On back of each flap write the definition and function of each part of the blood.

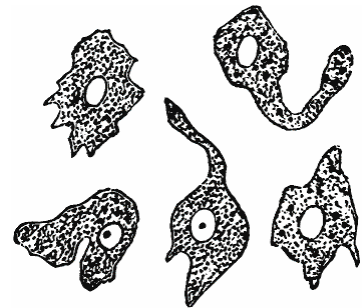
[www.homeschoolshare.com](http://www.homeschoolshare.com)

PLASMA



RED  
BLOOD  
CELLS

This side gets glued into  
lapbook



WHITE  
BLOOD  
CELLS

BLOOD