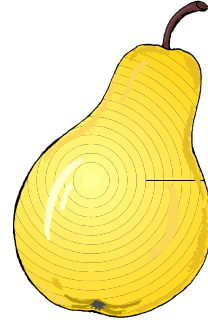




Nala
Gift



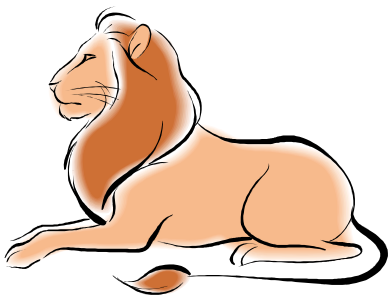
peya (pay'-yah)
pear



duka (doo'-kuh)
shop



Safari
Journey



Simba
lion



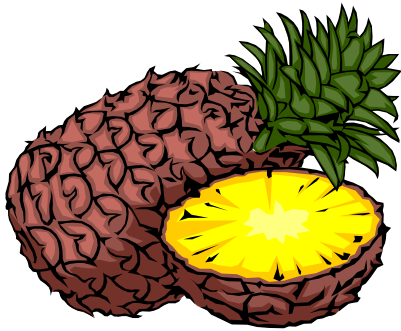
Rafiki
friend



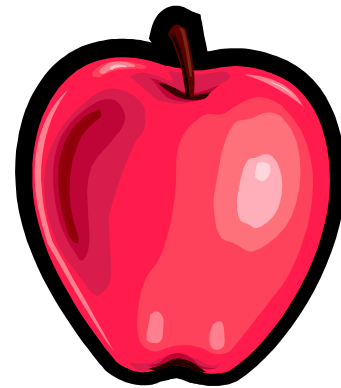
buba (boo'-buh)
an African house



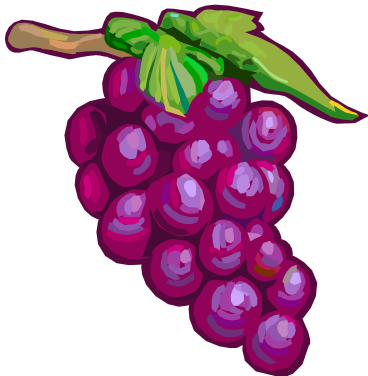
jambo (jahm'-bo)
hello



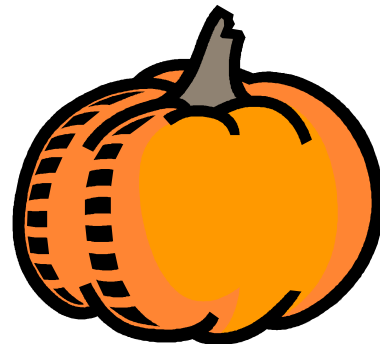
nanasi (nah-nah'-see)
pineapple



tufa (too'-fah)
apple



zazibu (zah-zee'-boo)
grapes



boga (bo'-gah)
pumpkin