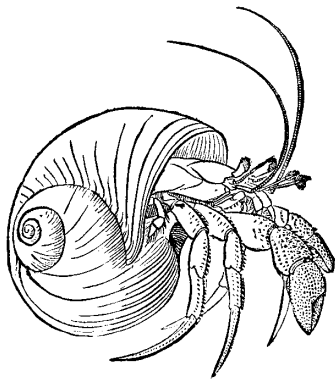


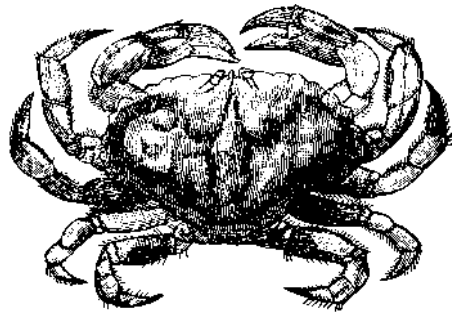
Chapter 14 Flora and Fauna



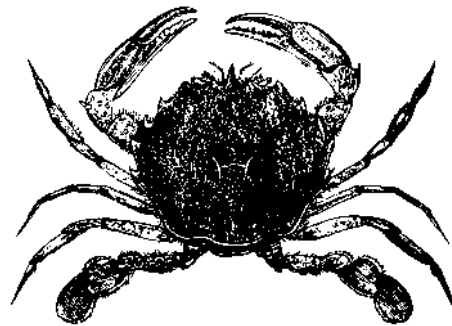
Hermit Crab



Snail



Rock Crab



Swimming Crab

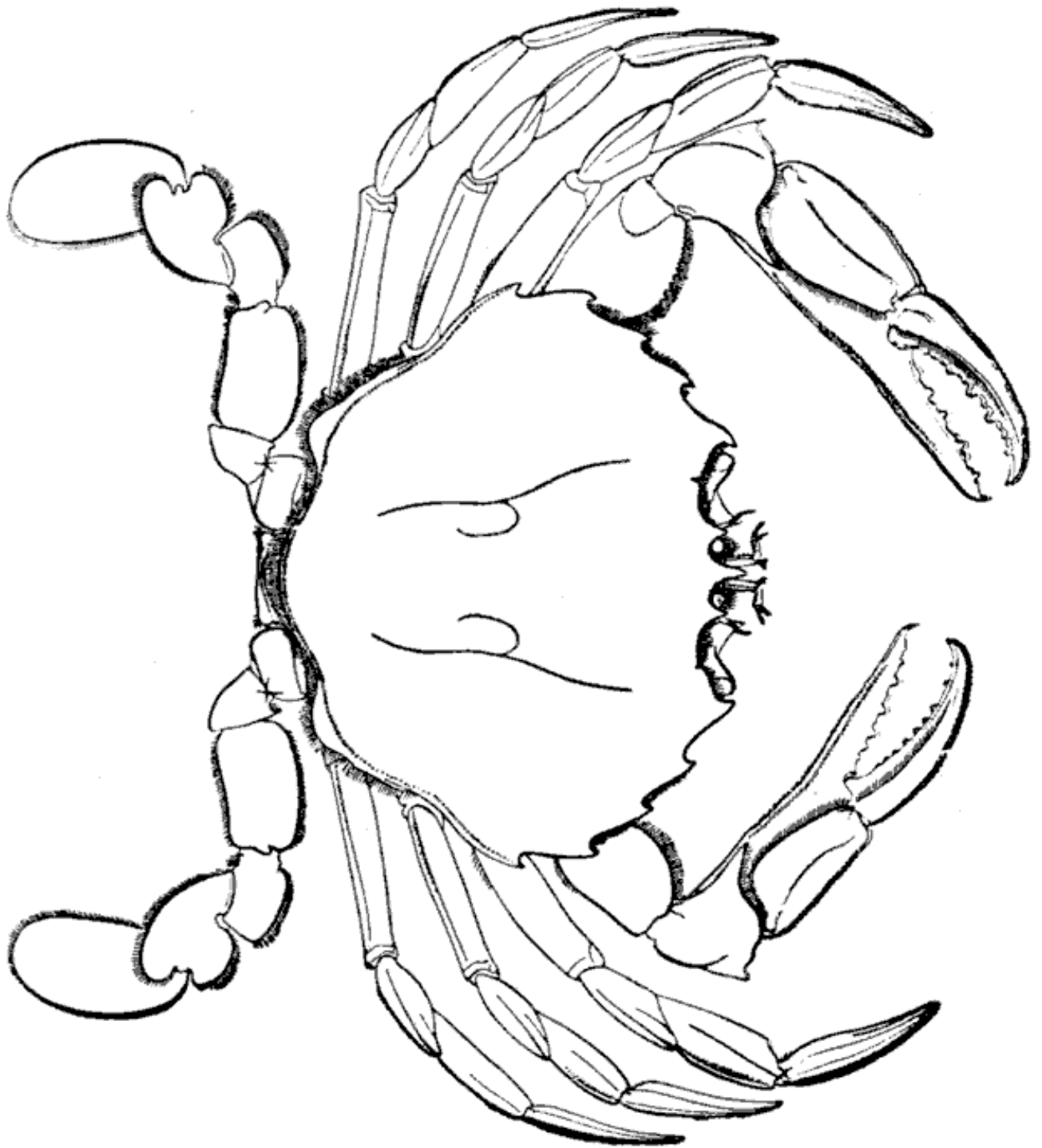


Algae



Eelgrass/Seaweed/Rockweed

Decorate This Crab To Resemble the Masked Lady

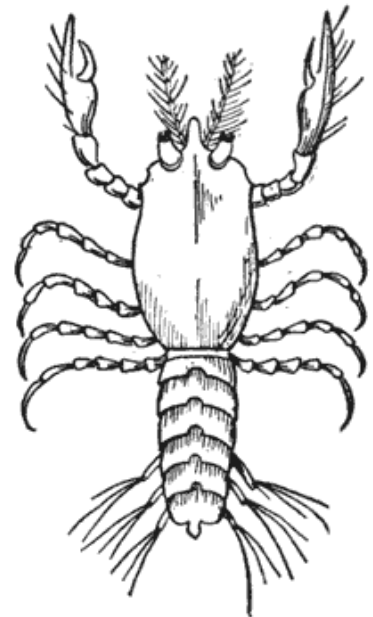


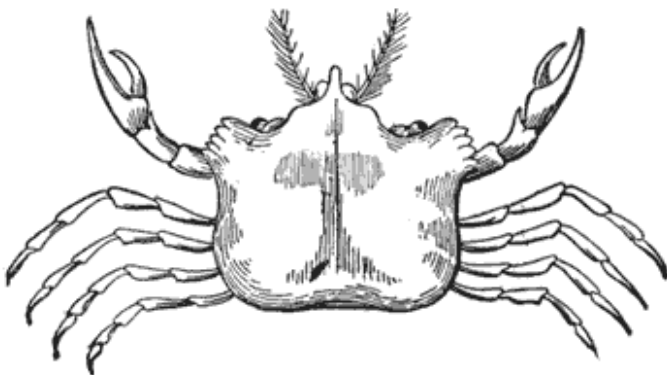
Crab Life Cycle

An adult crab lays eggs. The eggs hatch into young larva called Zoaea Larva, that swim around with plankton. They then grow into a larger larva, called a Megalopa Larva, and then finally into a full-grown adult crab.

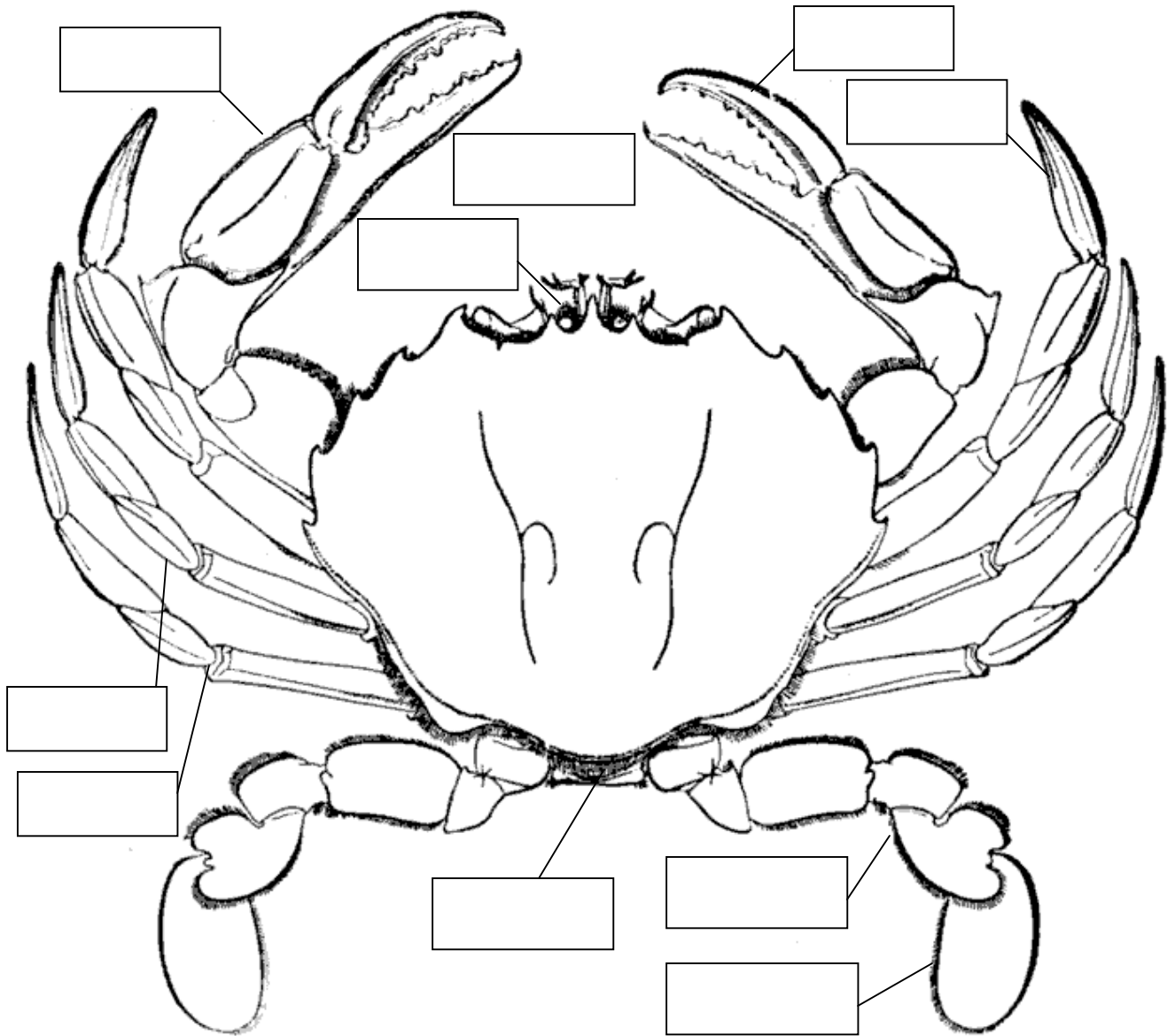
Label each stage of life







Crab Anatomy



Locate and label the following body parts:

ANTENNA
EYE
ABDOMEN
CLAW
HAND

FIRST LEG
SECOND LEG
THIRD LEG
FOURTH LEG
PADDLE

