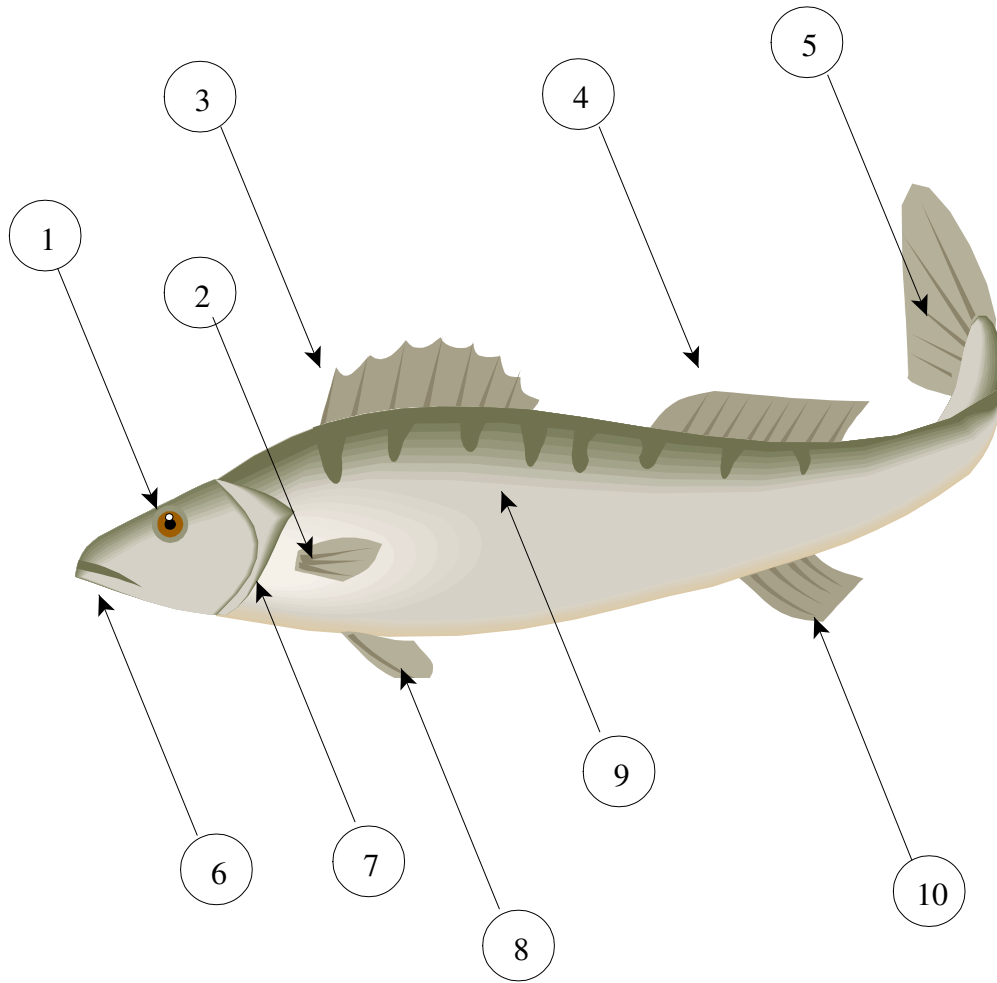


Physiology of a fish



1

2

3

4

5

6

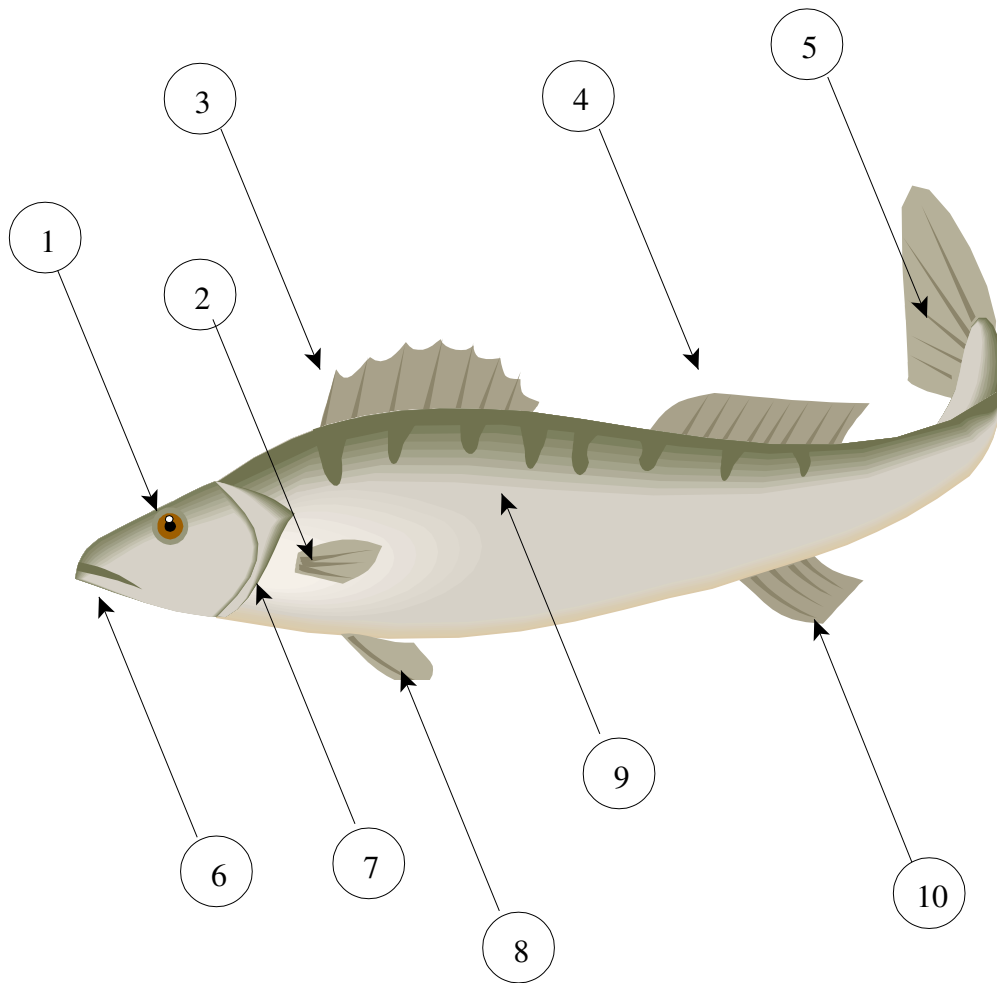
7

8

9

10

Physiology of a fish



1	-	Eye
2	-	Pectoral fin
3	-	Dorsal fin
4	-	Dorsal fin
5	-	Caudal fin
6	-	Mouth
7	-	Gill slits
8	-	Pelvic fin
9	-	Lateral line
10	-	Anal fin