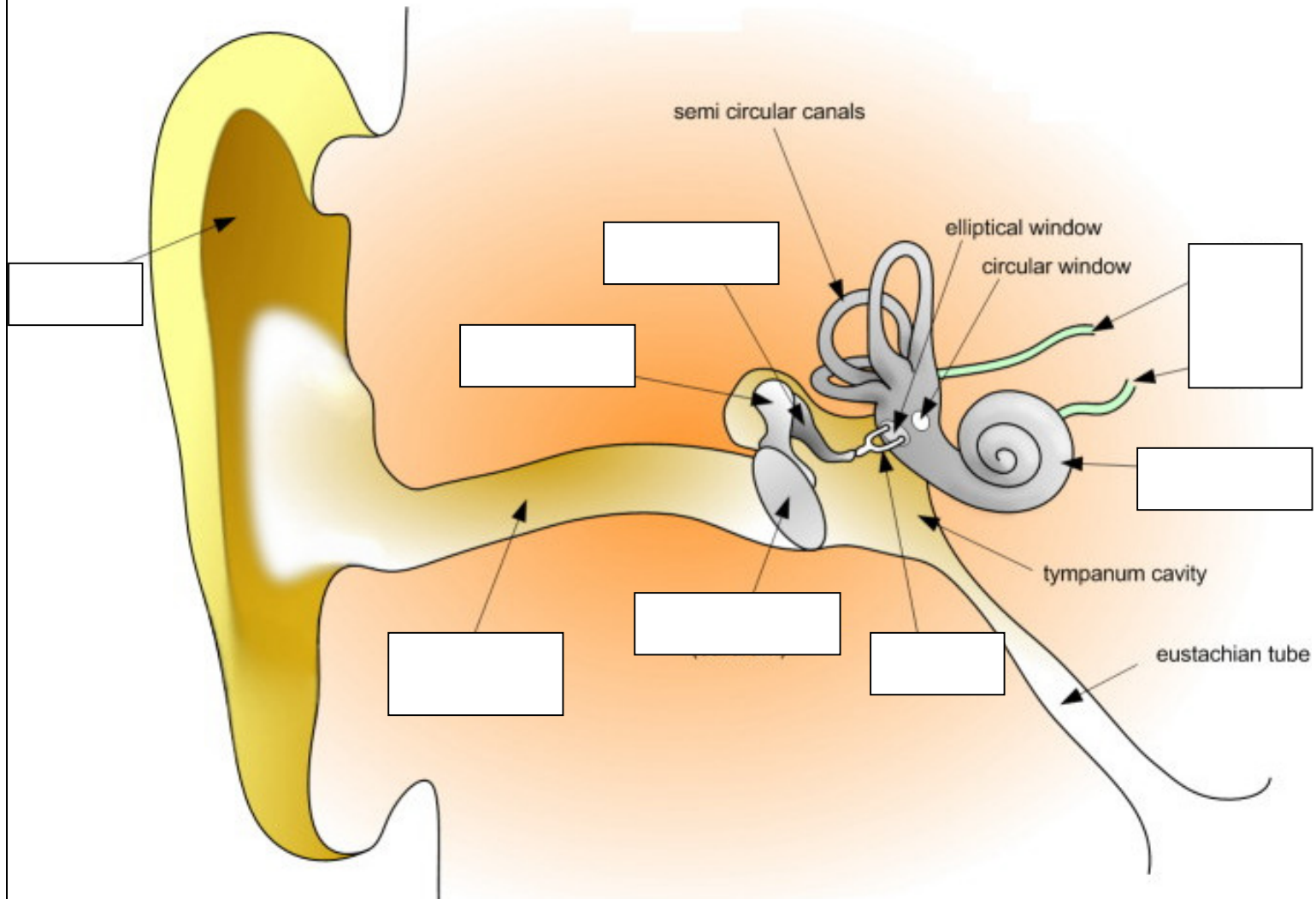


Label the following parts of the ear:

- (A) Auricle (B) Ear Canal (C) Eardrum (D) Hammer
(E) Anvil (F) Stirrup (G) Cochlea (H) Nerves



Parts of the Ear



Cut out Ear Diagram on solid lines.
Have child fill out appropriate parts.
Fold in half with text to inside.
Cut out and glue title graphic to cover.

